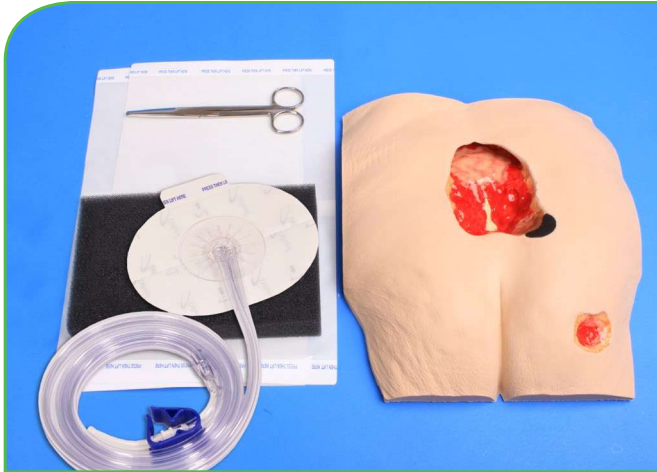


# DOME KIT APPLICATION

## Step-by-Step Process to Applying TopDraw® Dome Kits

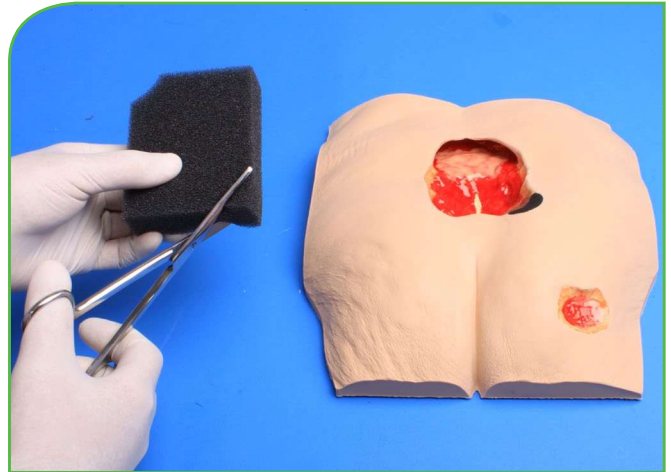
**IMPORTANT: CONSULT INSTRUCTIONS FOR USE FOR COMPLETE DIRECTIONS, WARNINGS, AND PRECAUTIONS.**



### STEP 1

(Prepare wound according to facility protocol.)

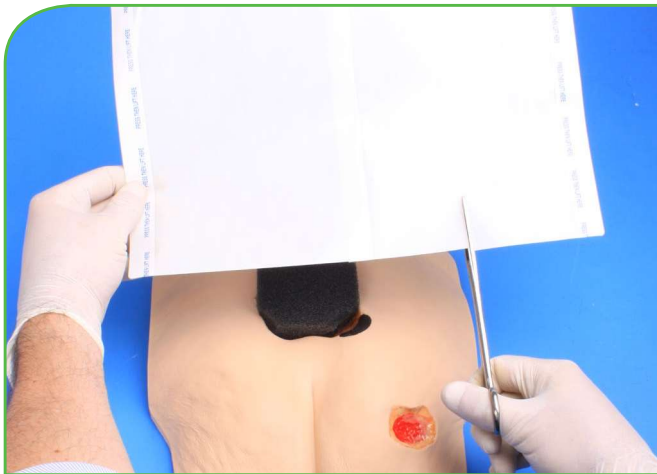
Cleanse wound gently and carefully with saline until the wound is free of debris and dead tissue. Gently blot dry the wound edges, periwound margin, and all skin to be covered by transparent dressing.



### STEP 2

If desired, place a primary, non-adherent dressing such as Transeal® dressing on the wound bed. Do not overlap onto intact skin.

- For foam dressing application, measure the wound and cut the foam to the appropriate size and shape. Gently place the foam dressing into the wound cavity. Fill the entire wound cavity but do not overlap on the intact skin. Do not cut the foam over the wound, as small fragments may fall into the wound bed. Do not force or push the foam dressing into the wound as this may cause further injury to the wound.
- For gauze dressing application, open the gauze and moisten with saline. Gently place the gauze in the wound bed. Fill the entire wound cavity but do not overlap on the intact skin. Do not force, push or over pack the gauze into the wound as this may cause further injury to the wound.



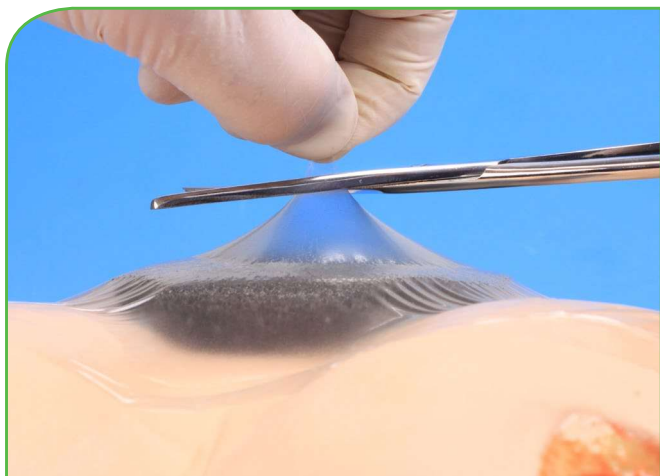
### STEP 3

Size and cut the Transeal® transparent dressing to cover the primary dressing. Make sure the primary dressing is completely covered and the Transeal® overlaps on the intact skin by at least one inch on all edges of the wound. Proper Transeal® application is the key to fewer alarms and less loss of seal issues.



### STEP 4

Gently press the top of the Transeal® dressing to ensure adhesive adheres to the skin. Remove the carrier layer of the Transeal.



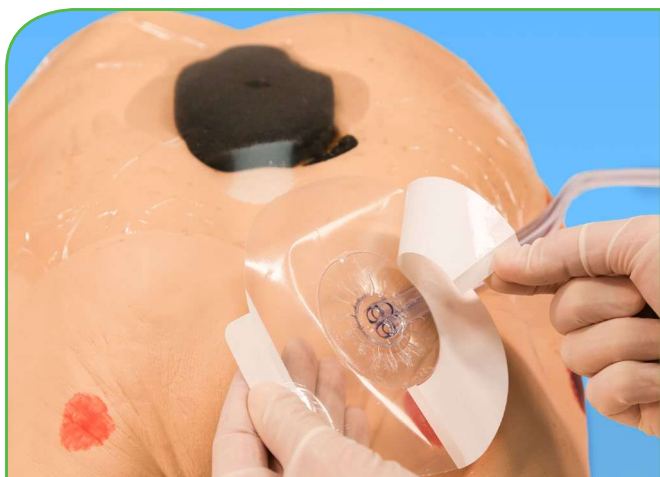
## STEP 5

Gently lift the Transeal® dressing with your thumb and forefinger. Cut a 2 to 2.5 cm hole in the Transeal over the center of the wound using either scissors or scalpel.



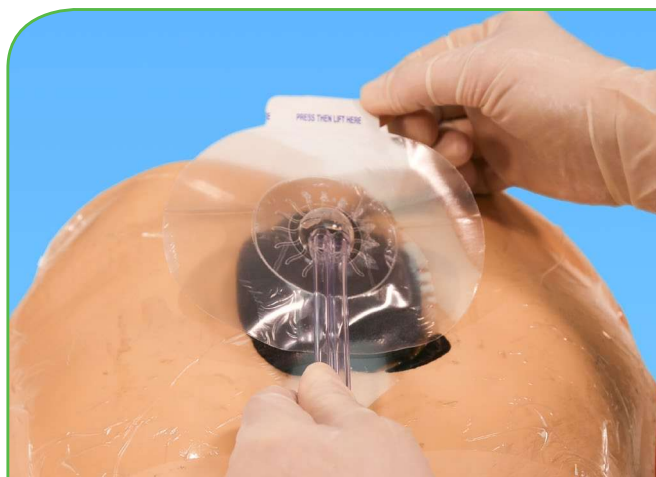
## STEP 6

Do not cut a slit, as a slit could collapse and block the suction when pressure is applied.



## STEP 7

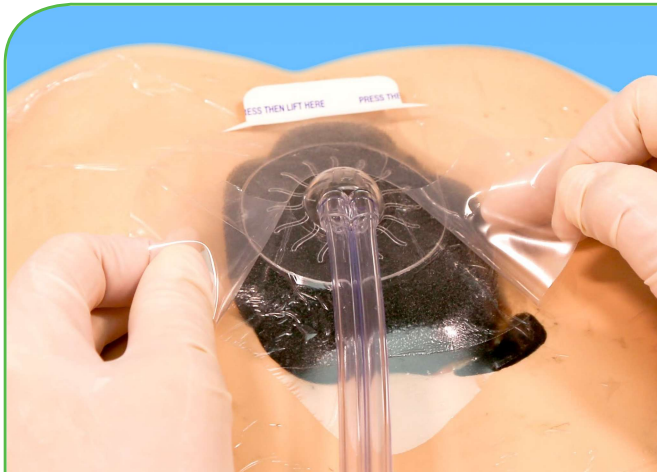
Hold the tab and pull the paper to release the liner from the dome pad.



## STEP 8

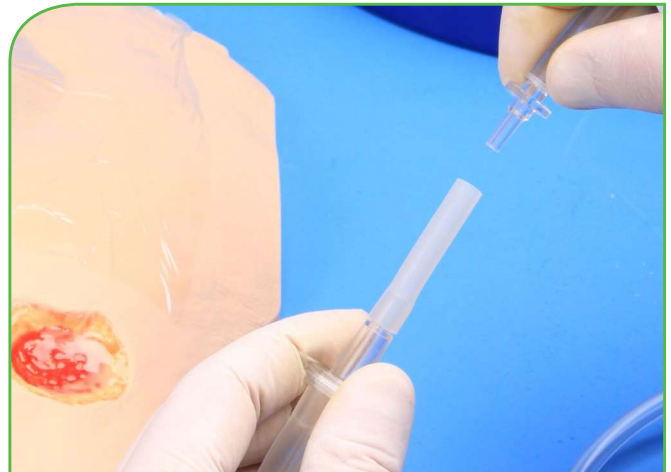
Place the center of the dome pad directly over the cut hole. Ensure the seal is completely adhered to the skin.

**IMPORTANT: CONSULT INSTRUCTIONS FOR USE FOR COMPLETE DIRECTIONS, WARNINGS, AND PRECAUTIONS.**



## STEP 9

Peel the clear backing liner off the connector. Peel off the tabs, and pat around the dome pad to ensure the seal is completely adhered to the skin.



## STEP 10

Connect the dome pad tubing to the end of the connector tube attached to the canister.  
(Every dome connector will have an adapter included.)



## STEP 11

Turn on the NPWT system. Make sure that the pressure is set at the proper mmHg per doctor's order.



## STEP 12

Turn on NPWT system to allow primary dressing, dome pad, and Transeal® to compress. A compressed look means the Transeal® is properly adhered to the skin and negative pressure is reaching the wound.

**IMPORTANT: CONSULT INSTRUCTIONS FOR USE FOR COMPLETE DIRECTIONS, WARNINGS, AND PRECAUTIONS.**