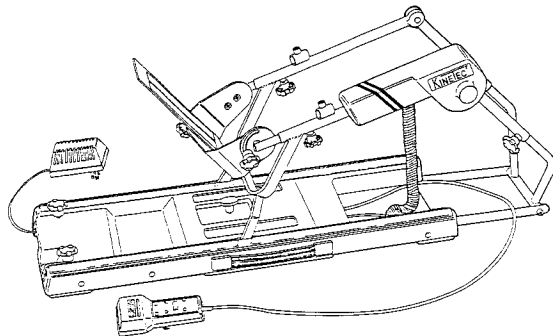


A PARTIR DE L'ATTELE N° 1
FROM SPLINT NUMBER 1
AB ANHANGUNG N° 1

NOMENCLATURE DES PIECES DETACHEES
NOMENCLATURE OF SPARE PARTS
NOMENKLATUR DER ERSATZTEILE



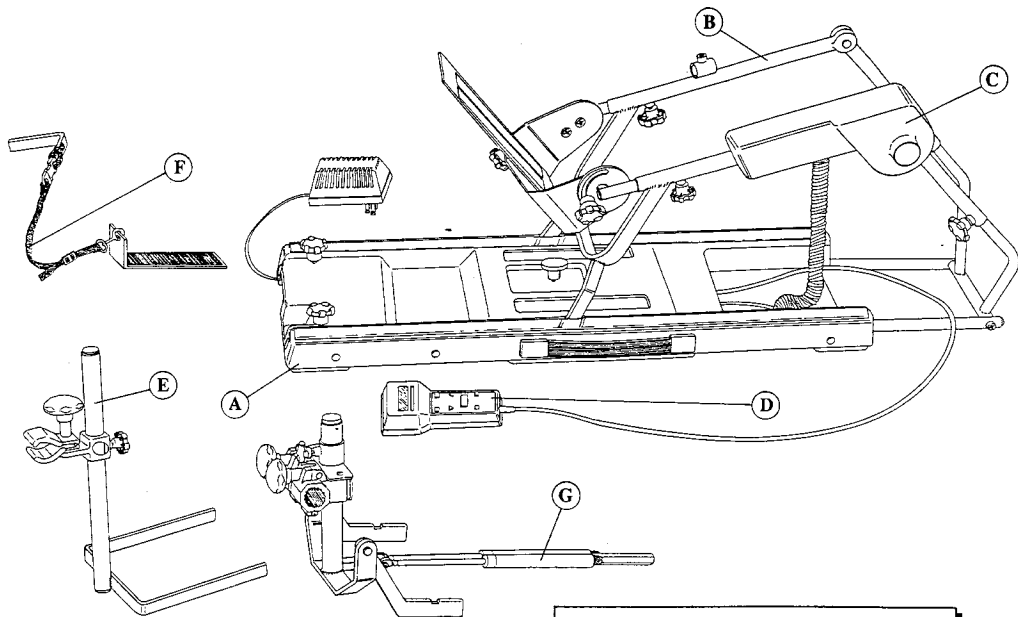
REF : 4071

APPAREIL DE MOBILISATION ARTICULAIRE PASSIVE DU GENOU
KNEE CONTINNOUS PASSIVE MOTION DEVICE
GERÄT FÜR PASSIVE GELENKBEWEGUNG DER KNIE

COGEMO se reserve le droit de toutes modifications techniques.

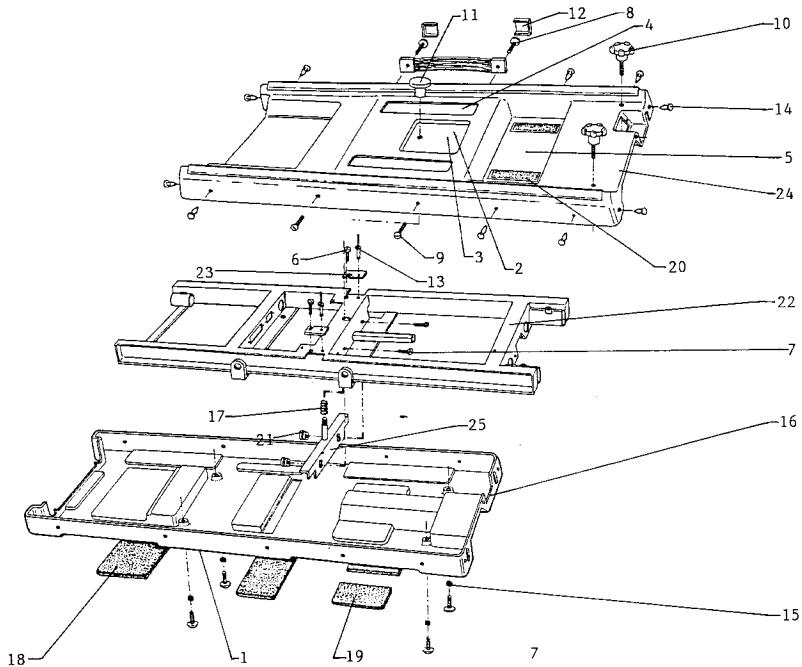
COGEMO reserves the right to effect technical modifications.

COGEMO behält sich das Recht vor, jegliche technische Änderungen durchzuführen.

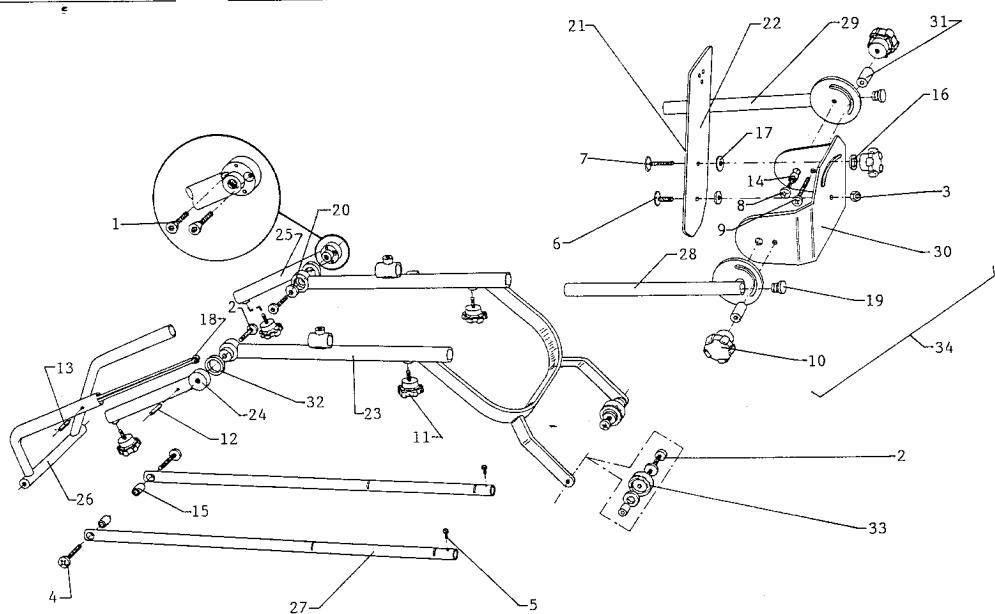


Manchon de rechange - Pads - Polters - 50000183

	<u>SOMMAIRE</u>	<u>CONTENTS</u>	<u>INHALTSVERZEICHNIS</u>	<u>PAGE</u> <u>SEITE</u>
A	ARMATURE DU KINETEC 4071	KINETEC 4071 ARMATURE	ARMATUR DER ANHÄNGUNG	3 - 4
B	SUPPORT DE JAMBE	LEG SUPPORT	TRÄGER FÜR BEIN	5 - 6
C	MOTEUR	MOTOR	MOTOR	7 - 8
D	ELECTRONIQUE/ELECTRIQUE	ELECTRONIC/ELECTRIC	ELEKTRONISCHEN UND ELEKTRISCHEN	9 - 10
E	OPTION : BUTOIR A 90°	OPTION : SLIDING STOP	ZUBEHOR : AUSZIEHBARE HALTERUNG	11
F	OPTION : SANGLE MONTEE	OPTION : BED STRAP	ZUBEHOR : GURTBETT	12
G	OPTION : DISPOSITIF DE LEVAGE A 90°	OPTION : LIFT CLAMP	ZUBEHOR : "LIFT CLAMP"	13 - 14
H	SCHEMA ELECTRIQUE	WIRING DIAGRAM	SCHALTPLAN	15



N°	REF. NUMBER BEST.Nr.	Q. Q. ANZ.	DESIGNATION	DESIGNATION	BEZEICHNUNG
1	15001564	1	Etiquette de firme	Identification Label	Zettel Identifizierung
2	15001598	1	Etiquette caution (U.S.A)	"Caution" Label (U.S.A)	Zettel " Caution" (U.S.A)
3	15001605	1	Etiquette de position	Position Label	Zettel
4	15001655	2	Plaque de firme	Red Label	Zettel Rot
5	15001712	1	Plaque d'adresse U.S.A	Adress plate (U.S.A)	Zettel "Adress" (U.S.A)
6	20000600	2	Vis TCF inox M4x8mm	4x10mm TCF screw	Schraube TCF, inox
7	20002226	6	Vis B cruci.H M4x10mm	Screw, B stanley H M4x10mm	Schraube B, Kreuzkopf
8	20002701	2	Vis F cruci.H M4x16mm	Screw, F stanley H M4x16mm	Schraube F, Kreuzkopf
9	20002713	7	Vis TF plastique M4x10mm	TF plastic screw	Plastikschraube TF
10	70011318	2	Bouton serrage male M6x25mm	Locking knob	Verriegelungsschraube
11	25000663	1	Bouton indexage femelle M6	Black button	Taster
12	25000671	1	Poigné de transport	Carry handle	Tragegriff
13	26000547	2	Rivet aveugle alu ø 3x8mm	ø 3x8mm Pin	Niete ø 3x8mm
14	26000852	11	Rivet nylon 93-10	93-10 nylon pin	Niete 93-10
15	30000731	4	Rondelle plate ø 4x10x1mm	ø 4x10x1mm plate washer	Unterlegscheibe
16	35003889	1	Carter inférieur ABS	Lower casing	Unteres Gehäuse
17	35003920	1	Ressot d'indexage	Spring index	Sprenzel
18	35003938	2	Mousse ADH.150x95 Ep= 6mm	150x95mm Sleeve	Schraumstoff
19	35003946	2	Mousse ADH.95x45 Ep= 6mm	95x45mm Sleeve	Schraumstoff
20	45000338	1	Velcro	Velcro strap	Spannriemen velcro
21	70010881	2	Ecrou d'indexage	Nut index	Indexmutter
22	70010906	1	Socle 4071	Base	Rahmen
23	70010980	2	Plaquette verouillage rail	Locking plate	Schlubplatte
24	70011029	1	Carter supérieur monte	Upper casing	Höher Gehäuse
25	70011045	1	Tole d'indexage	Index plate	Indexeisenblech

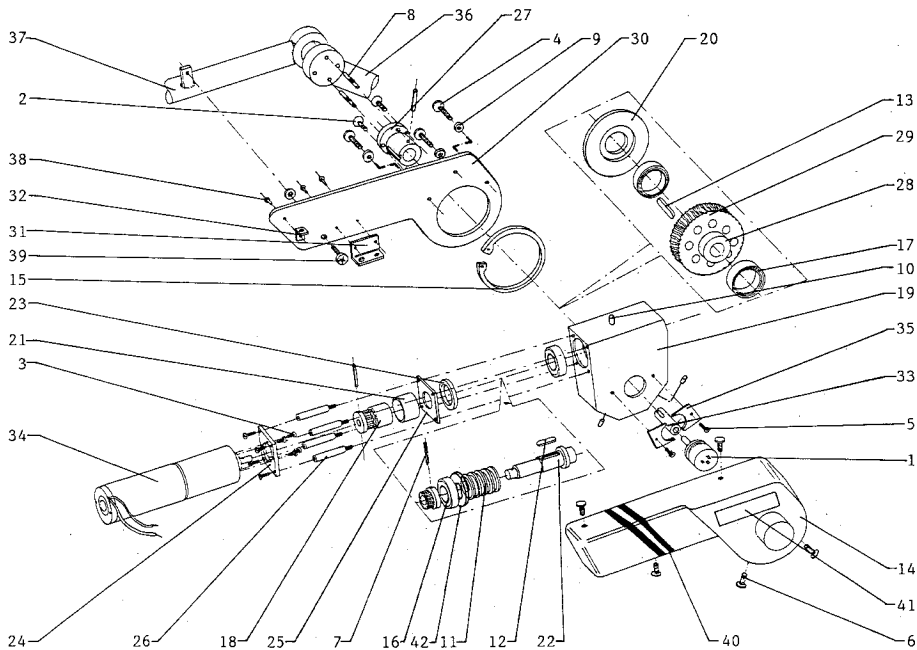
B SUPPORT DE JAMBE**B LEG SUPPORT****B TRÄGER FÜR BEIN**

B SUPPORT DE JAMBE

B LEG SUPPORT

B TRÄGER FÜR BEIN

N°	REF. NUMBER BEST.Nr.	Q. Q. ANZ.	DESIGNATION	DESIGNATION	BEZEICHNUNG
1	20000337	2	Vis TF zing M3x16mm	3x16mm TF screw	Schraube TF, verzinkt
2	20000808	4	Vis BHC inox M6x16mm	6x16mm BHC screw	Schraube BHC, inox
3	20001707	1	Ecrou H frein M6	M6 locknut	M6 mutter
4	20002250	2	Vis B cruci.H M6x30mm	Screw, B stanley H M6x30mm	Schraube B, Kreuzkopf
5	20002268	2	Vis B cruci.H M2.5x6mm	Screw, B stanley H M2.5x6mm	Schraube B, Kreuzkopf
6	20002391	1	Vis F cruci.H M6x12mm	Screw, F stanley H M6x12mm	Schraube F, Kreuzkopf
7	20001202	1	Vis F cruci.H M6x16mm	Screw, F stanley H M6x16mm	Schraube F, Kreuzkopf
8	20002440	2	Vis B cruci.H M6x12mm	Screw, B stanley H M6x12mm	Schraube B, Kreuzkopf
9	20002250	2	Vis B cruci.H M6x30mm	Screw, B stanley H M6x30mm	Schraube B, Kreuzkopf
10	25000689	3	Bouton molette femelle noir M6	Black button	Taster
11	25000697	4	Bouton serrage male noir 3041-15	Locking knob	Verriegelungsschraube
12	26000703	1	Goupille elastique M brut ø 4x19mm	ø 4x19mm pin	Stift, 4x19mm
13	26000696	1	Goupille cannelée ø 4x15mm	ø 4x15mm pin	Stift, 4x15mm
14	27000067	2	Entretoise brute ø 6x8x4mm	ø 6x8x4mm spacer	Distanzhülse, ø 6x8x4mm
15	27000158	2	Entretoise brute ø 6x8x16mm	ø 6x8x16mm spacer	Distanzhülse, ø 6x8x16mm
16	30000260	1	Rondelle plate inox ø 6,2x12x1,2mm	ø 6,2x14x1mm plate washer	Unterlegscheibe, ø 6,2x14x1mm
17	30000624	2	Rondelle plate nylon ø 6x16x0,5mm	ø 6x16x0,5mm nylon washer	Unterlegscheibe, ø 6x16x0,5mm
18	35002451	1	Epingle acier L= 165mm	L= 165mm pin	Stift
19	37000049	2	Embout rond noir EAZ 15mm	EAZ 15mm cover	Abdeckung, EAZ 15mm
20	39000394	2	Rondelle LS 0619	LS 0619 washer	Unterlegscheibe LS 0619
21	45000338	1	Velcro	Velcro strap	Spannriemen velcro
22	70009181	1	Planchette	Foot	Fussplatte
23	70010782	1	Element jambier	Lower leg support	Unterschenkelauflage
24	70010790	1	Element crural droit	Right fixed upper leg support	Rechte festes teil der Oberschenkelauflage
25	70010807	1	Element crural gauche	Left fixed upper leg support	Linke festes teil der Oberschenkelauflage
26	70010823	1	Couliisse crurale	Sliding half upper leg support	Herausziehbarer teil der Unterschenkelauflage
27	70010831	2	Tube support couliisse crural	Support tube of sliding half upper leg support	Trägerrohre für herausziehbarer teil der unterschenkelauflage
28	70010849	1	Couliisse jambière droite	Right foot support tube	Rechte halterung für Rotationsstütze
29	70010857	1	Couliisse jambière gauche	Left foot support tube	Linke halterung für Rotationsstütze
30	70010865	1	Support planchette	Pivoting foot support	Rahmen Fussplatte
31	70010873	2	Entretoise serrage planchette	Tighten spacer of foot plate	Distanzhülse für d'rücken fussplatte
32	70010998	2	Rondelle de chape ø 15x30x1mm	ø 15x30x1mm washer	Unterlegscheibe, ø 15x30x1mm
33	39000427	2	Galet nylon 29,5x12,5mm	29,5x12,5mm nylon roots	Nylonrod 29,5x12,5mm
34	70011011	1	Planchette montée	Hinged foot support assy	Gelenk der fussplatte

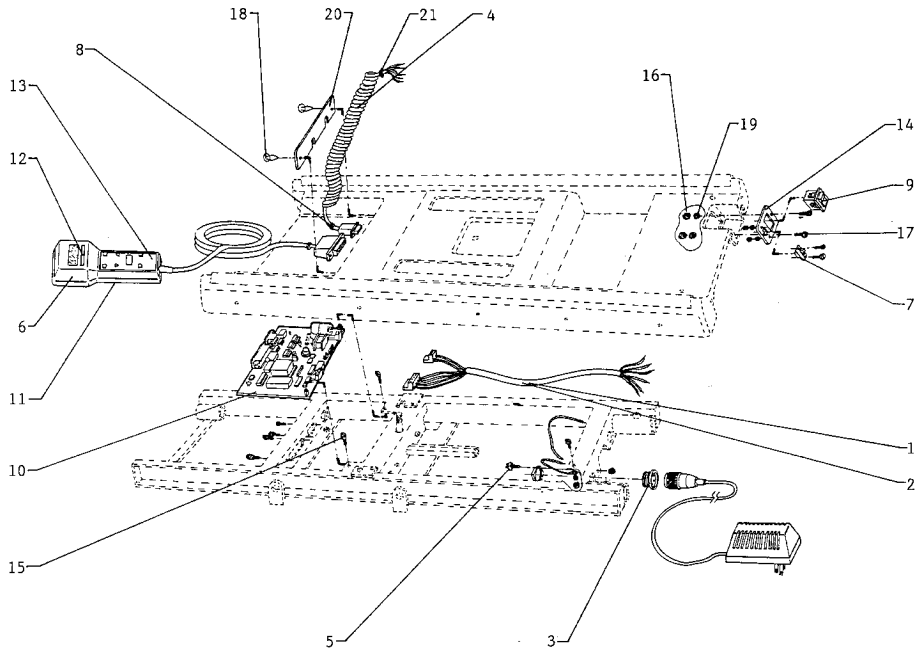


C MOTEUR

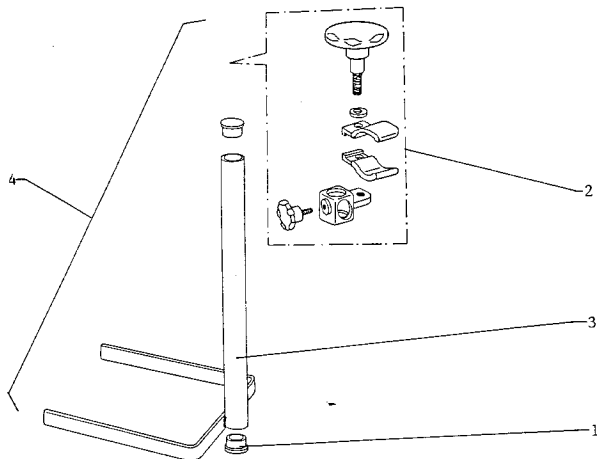
C MOTOR

C MOTOR

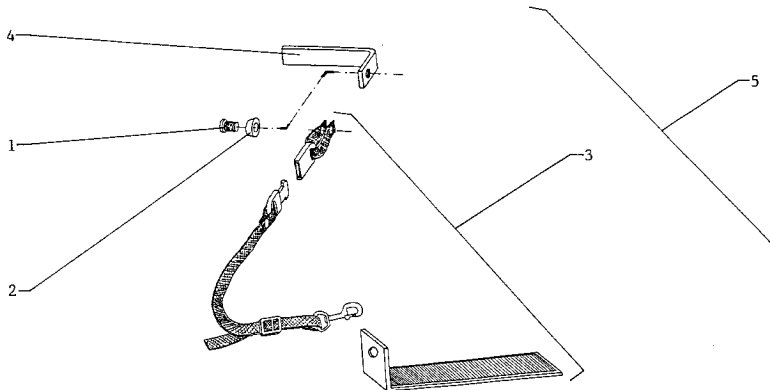
N°	REF. NUMBER BEST.Nr.	Q. Q. ANZ.	DESIGNATION	DESIGNATION	BEZEICHNUNG
1	10004539	1	Potentiomètre copie 10K	Copy potentiometer	Potentiometer
2	20000337	2	Vis TF zing M3x16mm	3x16mm TF screw	Schraube TF, Verzink
3	20000535	4	Vis TCF inox M3x6mm	3x6mm TCF screw	Schraube TCF, Inox
4	20000387	3	Vis TCF inox M4x10mm	4x10mm TCF screw	Schraube TCF, Inox
5	20002268	6	Vis B cruci.H M2,5x6mm	Screw, B stanley H M2,5x6mm	Schraube B, Kreuzkopf
6	20002713	5	Vis TF plastique M4x10mm	TF plastic screw	Plastikschrabe TF
7	26000240	3	Goupille elastique M brut ø 2,5x16mm	ø 2,5x16mm pin	Stift, 2,5x16mm
8	26000844	2	Goupille cannelée G2-P ø 4x16mm	ø 4x16mm pin	Stift, 4x16mm
9	30000567	3	Rondelle nylon ø 4,3x8x1mm	ø 4,3x8x1mm nylon washer	Unterlegscheibe aus nylon
10	70011343	3	Entretoise serrage capot	Fixing cover space	Distanzhülse für Gehäuse
11	35003962	1	Vis sans fin	Screw with not end	Schraube ohne ende
12	35003988	1	Clavette forme a 3x3x18mm	3x3x18mm Peg	Vorstecknagel 3x3x18mm
13	35003996	1	Clavette forme a 5x5x18mm	5x5x18mm Peg	Vorstecknagel 5x5x18mm
14	35004027	1	Carter moteur	Motor casing	Motor Gehäuse
15	35004035	1	Circlips ø 68mm	ø 68mm circlip	Haltering, Aossendu rchmesser
16	39000401	2	Roulement 609 ZZ ø 9x24x7mm	Bearing ø 9x24x7mm	Lager ø 9x24x7mm
17	39000419	2	Roulement 6806 ZZ ø 30x42x7mm	Bearing ø 30x42x7mm	Lager ø 30x42x7mm
18	70011334	1	Accouplement elastique	Flexible compling	Kupplung
19	70011079	1	Bloc reducteur alu	Reductor box	Block reductor
20	70011087	1	Flasque reducteur alu	Reductor cover	Reductor gehäuse
21	70011095	1	Rondelle d'accouplement	Coupling washer	Kupplung unterlegscheibe
22	70011102	1	Axe de vis sans fin	Axle of screw with not end	Achse für schraube ohne ende
23	70011110	1	Rondelle de reglage	Adjusting washer	Unterlegscheibe für einstellen
24	70011128	1	Plaque support moteur	Motor support	Motor halterung
25	70011136	1	Plaque d'appui roulement	Press plate of bearing	Platte für stützzeas lager
26	27000603	4	Entretoise	Spacer	Distanzhülse
27	70011152	1	Axe de sortie reducteur	Reductor exII axle	Achse
28	70011160	1	Support roulement colle/roue	Bearing support	Halter für lager
29	70011178	1	Roue reducteur usinée	Reductor	Reductor
30	70011186	1	Plaque de base reducteur	Reductor plate	Platte für reductor
31	70011194	1	Equerre support passe cable	Snuffing box support	Halter für kabeldurch führung
32	70011201	1	Equerre support capot	Cover support	Halter für gehäuse
33	70011219	1	Accouplement nylon	Compling nylon	Kupplung aus nylon
34	70011227	1	Moteur perce	Motor	Motorbürsten
35	70011235	2	Pate fixation potentiomètre	Plate of fixing potentiometer	Platte für halter potentiometer
36	70010807	1	Element crural gauche	Left fixed upper leg support	Herausziehbarer teil der unterschenkelauflage
37	70010782	1	Element jambier	Lower leg support	Unterschenkelauflage
38	26000737	3	Rivet	Rivet	Niete
39	20002234	1	Vis B cruci.H M6x	Screw, B stanley H M6x	Schraube B, Kreuzkopf
40	15001697	1	Etiquette bande rouge	2 Red band	Zettel 2 rotbander
41	15001720	1	Etiquette "KINETEC"	"KINETEC" Label	Zettel "KINETEC"
42	70011326	1	Entretoise reducteur	Reductor spacer	Distanzhülse für Reductor



N°	REF. NUMBER BEST.Nr.	Q. Q. ANZ.	DESIGNATION	DESIGNATION	BEZEICHNUNG
1	10001113	1	Cable blinde 3 conducteur 9939	9939 Cabel	Kabel 9939
2	10001121	1	Cable blinde 4 conducteur 9940	9940 Cabel	Kabel 9940
3	10005595	1	Embase 3 broches male T 3262-000	Shell socket 3 holes	Sokel kabel T 3262-000
4	10005686	1	Cable spirale 8S 636 2 mètres	8S 636 Cable	Kabel 8S 636
5	10005694	1	Fiche jack	Shell socket "jack"	Stöpsel "jack"
6	10005701	1	Boitier de commande	Control box	Handschalter
7	10005743	1	Commutateur glissant 563-66356F	563-66356F Switch	Schalter 563-66356F
8	10002955	1	Passe fil 2515	2515 stuffing box	Kabeldurchführung
9	10005769	1	Interrupteur unipol. E110 MR 21J	E110 MR 21J Switch	Schalter E110 MR 21J
10	10005800	1	Carter de base	Mother board	Grundkarte
11	15001639	1	Etiquette instruction	Instruction label	Zettel "instruction"
12	15001671	1	Etiquette afficheur	Display label	Zettel für zettelankleber
13	15001689	1	Face avant boitier	Front face	Deckplatte
14	15001704	1	Plaque power	Power plate	Zettel "power"
15	20000535	2	Vis TCF inox M3x6mm	3x6mm TCF screw	Schraube TCF, inox
16	20001559	2	Ecrou nickel H M2	M2 locknut	M2 mütter
17	20002466	2	Vis B cruci.H M2x8mm	Screw, B stanley H M2x8mm	Schraube B, Kreuzkopf
18	26000836	2	Attache a pression 5 3785	Snap Fastener	Schieber
19	30000012	2	Rondelle AZ zing ø 2mm	ø 2mm AZ washer	Unterlegscheibe, ø 2mm
20	70010899	1	Plaque passe cable avant	Plate for stuffing box	Platte für kabeldurchführung
21	10005751	2	Passe fil 55/88/15	55/88/15 Stuffing box	Kabeldurchführung

E OPTION : BUTOIR A 90°E OPTION : SLIDING STOPE ZUBEHOR : AUSZIEHBARE HALTERUNG

N°	REF. NUMBER BEST.Nr.	Q. Q. ANZ.	DESIGNATION	DESIGNATION	BEZEICHNUNG
1	37000073	2	Embout rond noir 22 CTY	22 CTY black cover	Endstopfen ø 22mm
2	70005410	1	Collier de butoir monte	Clamp assy	Klemmenteile
3	70011277	1	Butoir à 90°	Sliding stop	Ausziehbare stütze
4	70011285	1	Butoir à 90° monte	Sliding stop assy	Ausziehbare stütze und halterung für klemme

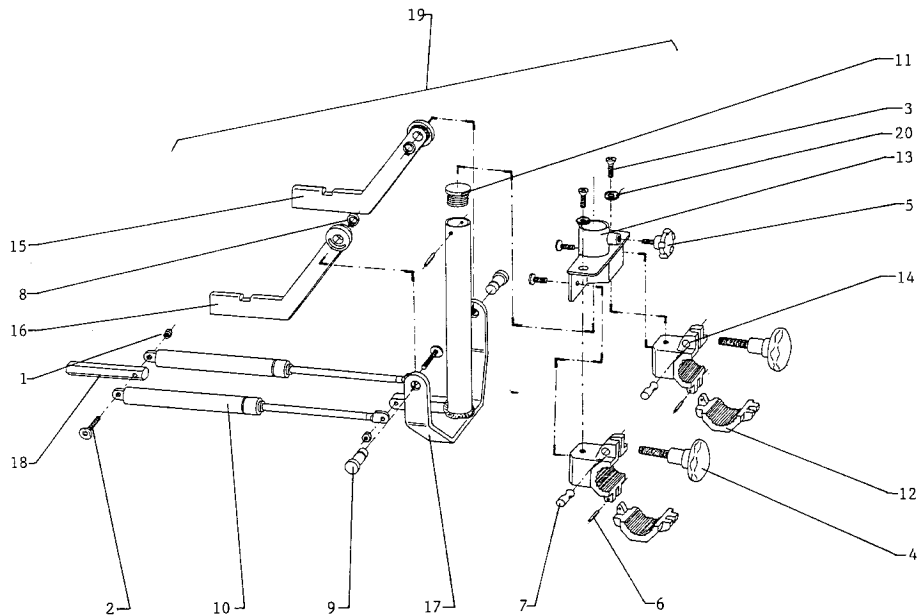
F OPTION : SANGLE MONTEE**F OPTION : BED STRAP****F ZUBEHÖR : GURTBETT**

N°	REF. NUMBER BEST.Nr.	Q. Q. ANZ.	DESIGNATION	DESIGNATION	BEZEICHNUNG
1	20002507	1	Vis F cruci.H M4x12mm	Screw, F stanley H M4x12mm	Schraube F, Kreuzkopf
2	35000819	1	Pied noir 735/16	735/16 Black foot	Schwrazanschlag 735/16
3	70009149	1	Sangle montée	Bed strap assy	Gurtbett
4	70011293	1	Pate a 90°	Square	Winkelmaß
5	70011300	1	Sangle d'attache au lit 4071	Bed straps	Gurtbett komplett

G OPTION : DISPOSITIF
DE LEVAGE A 90°

G OPTION : LIFT CLAMP

G ZUBEHOR : "LIFT CLAMP"



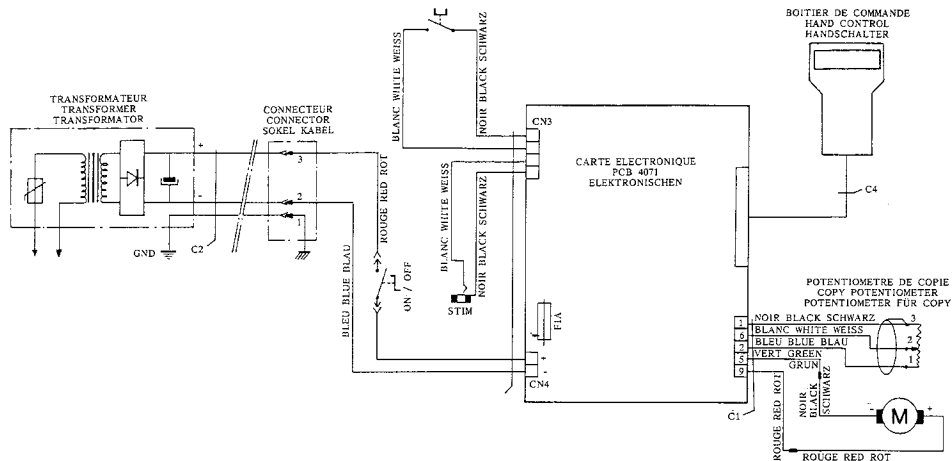
**G OPTION : DISPOSITIF
DE LEVAGE A 90°**

G OPTION : LIFT CLAMP

G ZUBEHÖR : "LIFT CLAMP"

N°	REF. NUMBER BEST.Nr.	Q. Q. ANZ.	DESIGNATION	DESIGNATION	BEZEICHNUNG
1	20001707	2	Ecrou H frein M6	M6 locknut	M6 mutter
2	20002333	2	Vis B cruci.H M6x25mm	Screw. B stanley H M6x25mm	Schraube B, Kreuzkopf
3	20002242	4	Vis B cruci.H M6x20mm	Screw. B stanley H M6x20mm	Schraube B, Kreuzkopf
4	25000449	2	Poignée crenelée male	Stop knob	Verriegelungsschraube weiss
5	25000473	1	Bouton serrage male M6x15mm	Locking knob	Verriegelungsschraube
6	26000422	3	Goupille elastique zing ø 4x30mm	ø 4x30mm pin	Stift, ø 4x30mm
7	35000679	2	Pivot de machoire	Pivot of gripping-jaws	Aschle
8	35000968	2	Circlips extérieur ø 8mm	External circlip ø 8mm	Haltering, Aussendurchmesser
9	35001601	2	Axe chape chrome ø 8mm	ø 8mm spindle	Chromshaft ø 8mm
10	35003970	2	Verin ø 6mm 10K course 150	ø 6mm Gaz jack	Schrauben winde
11	37000081	1	Embout rond orange EAZ 25mm	EAZ 25mm cover	Abdeckung, EAZ 25mm
12	70008836	2	Couvercle	Cover of gripping-jaws	Deckel
13	70009967	1	Support machoire	Gripping-jaws support	Halter für zange
14	70009975	2	Machoire ST perce tarandage	Gripping-jaws without root	Zange
15	70010922	1	Bras gauche FEATHER LIFT	LIFT CLAMP left bar	Arm links für "LIFT CLAMP"
16	70010930	1	Bras droit FEATHER LIFT	LIFT CLAMP right bar	Arm rechte für "LIFT CLAMP"
17	70010956	1	Etrier FEATHER LIFT	FEATHER LIFT stirrup	Sattel FEATHER LIFT
18	70010964	1	Support verin FEATHER LIFT	Gaz jack support	Halter für schrauben winde
19	70010972	1	Dispositif de levage à 90° complet	LIFT CLAMP assy	"LIFT CLAMP" komplett
20	30000260	4	Rondelle plate 6,2x12x1,2mm	6,2x12x1,2mm plate washer	Unterlegscheibe 6,2x12x1,2mm

H SCHEMA ELECTRIQUE H WIRING DIAGRAM H SCHALTPLAN



CONTINUOUS PASSIVE MOTION MACHINES

SERVICE POLICY For Service and Repair of Products

1. Products Serviced and Repaired by SMITH & NEPHEW RICHARDS INC.:

Subject to the provisions set forth herein, RICHARDS will service and repair any products manufactured and sold by RICHARDS that are under warranty. Unauthorized repair of products under warranty will void the warranty.

2. Procedure for Service and Repair:

In order for the product to be serviced or repaired, the product must be forwarded at the customer's expense to RICHARDS.

3. Costs of Service and Repair:

The costs of the service and repair rendered by RICHARDS will be based upon the then prevailing hourly labor rate and list price for parts on the date RICHARDS performs the requested service and repair. RICHARDS reserves the right to change the hourly labor rate and list price for parts at any time, without prior notice to the customer.

4. Warranty of Service and Repair:

RICHARDS warrants the service and repair of each product to be free from defects in material and workmanship under normal use and service for the warranty period set forth below and subject to the provisions hereof.

As to the performance of service and repair, the obligation of RICHARDS under this warranty is solely limited to the following:

If during the 30 day period subsequent to any service or repair of any product by RICHARDS, the product again fails to properly function; and

if such malfunction, in the judgment of RICHARDS, is solely the result of improper or inadequate service or repair, RICHARDS will again service or repair the product at no charge to the customer for labor or parts. The cost of any mailing or freight charge for return of the product will be the responsibility of the customer. The 30 day period will begin on the date that the product leaves RICHARDS.

The foregoing warranties are in lieu of all other warranties express or implied, including, but not limited to, the implied warranties of merchantability and fitness for a particular purpose or warranties arising from a course of dealing or usage of trade.

5. Refusal of Service and Repair:

RICHARDS reserves the right to refuse to service or repair any RICHARDS product forwarded to RICHARDS by a customer for service or repair. Upon such refusal, RICHARDS sole obligation to the customer, will be the return of the product to the customer, at the customer's sole cost and expense.

6. Changes in the Terms of the Service and Repair Policy:

RICHARDS reserves the right to change, amend or modify any or all of the terms under which it renders product service and repair. Customers who have previously received service and repair work from RICHARDS will be notified of any above-mentioned change, amendment, or modification of terms.

LIMITED EXPRESS WARRANTY

SMITH & NEPHEW RICHARDS INC. warrants each new product to be free from defects in material and workmanship under normal use and service, for the warranty period set forth below and subject to provision hereof.

The obligation of RICHARDS under this warranty is solely limited to repairing or replacing on an exchange basis at the election of RICHARDS, any product or part thereof, which is within **two years**, after delivery of the product to the original purchaser, returned to RICHARDS transportation prepaid, and which is determined by RICHARDS to be covered by the warranty. Warranty for reconditioned products or parts thereof is limited to **90 days**.

The warranty will not apply to any product which has been repaired or altered outside of the factory of RICHARDS, which RICHARDS determines in its sole discretion, has been subject to misuse, negligence, or accident.

The liability of RICHARDS, pursuant to the above-mentioned warranty, will exist only if the products are operated, cleaned and properly lubricated and otherwise used and maintained in accordance with the instructions furnished by RICHARDS and have been subjected to normal use for the purpose for which the goods were designed.

The foregoing warranties are in lieu of all other warranties express or implied, including, but not limited to, the implied warranties of merchantability and fitness for a particular purpose or warranties arising from a course of dealing or usage of trade.

RICHARDS will not be liable for special, indirect, consequential damages or other damages. The remedies set forth herein are exclusive, and the

liability of RICHARDS with respect to any contract sale, rental, of anything done in connection therewith, whether in contract, in tort, under any warranty, or otherwise, will not, except as expressly provided herein, exceed the price of the product on which such liability is based.

Any affirmation of fact, description of goods, or sample or model referred to in any product brochure, specification sheets or the like, whether or not the same relate to production or capability of the products to perform, do not form part of the basis for the bargain but are merely made in the course of the negotiations of the parties and are not to be construed as warranties unless specifically identified as such.

RICHARDS makes no warranty of any kind, express or implied, except as set forth above, and the purchaser shall be responsible for all risk and liability to any third party resulting from or arising from the use of said products, equipment or goods. RICHARDS neither assumes, nor authorizes any person to assume for RICHARDS, any other liability or obligation in connection with the sale or use of the products sold.

FOR THE WARRANTY TO BE EFFECTIVE, THE PURCHASER MUST COMPLETE AND RETURN THE WARRANTY CARD PROVIDED BELOW WITHIN 15 CALENDAR DAYS FROM THE DATE OF PURCHASE.